

Reentry Initiative: Transition from Jail to Community (TJC)

IMPROVING PUBLIC SAFETY & REINTEGRATION OUTCOMES

History: Based on a 27% increase in the jail's average daily population from 2003 to 2004, Sheriff McGovern invited the National Institute of Corrections to conduct a Jail System Assessment. This assessment planted the seed that intervention was needed at all levels: From the jail and criminal justice system into the community, there are numerous stakeholders that must invest in the improvement of public safety through inmates' successful reintegration.

Mission: "The Transition from Jail to Community Initiative is to develop & sustain a collaborative that improves public safety outcomes by increasing successful reintegration."

Measurements: TJC aims to improve public safety and enhance reintegration efforts. Douglas County's key measurements include:

- (1) Recidivism/Re-arrest and return rates to jail;
- (2) # of intervention referrals from jail to the community;
- (3) # of participants who attended first appointment;
- (4) # of participants engaged in service;
- (5) Length of service engagement;
- (6) Still engaged in service;
- (7) Homelessness;
- (8) Employment; and
- (9) Improved collaboration between stakeholders.

Processes:

- Inmate Sentenced
- Screened for community risk via Proxy
 - High-risk Proxy: Assessed via LSI.R
 - High-risk LSI.R: Provided highest level of reentry attention
- Referred to programming based on risk(s)/need(s)
- Initiate transition interventions post-release based on risk(s)/need(s)
- Reviewed for inmate worker, job search and work release eligibility based on screening, assessment, facility behavior, risk(s)/need(s)
- Release to community

Future Endeavors:

- Supportive community-based case management 90-180 days post-release
- Evaluate through core performance measures

Collaboration Accomplishments:

- Developed systemic organization structure of stakeholders from the jail to the community
- Defined shared goals and outcomes for the initiative
- Began data building, extraction and analysis of population characteristics
- Initiate pilot program to track and evaluate inmates post-release
- Completed Case-Flow Mapping (Screening/Assessment; Case Management Services; Facility-Based,

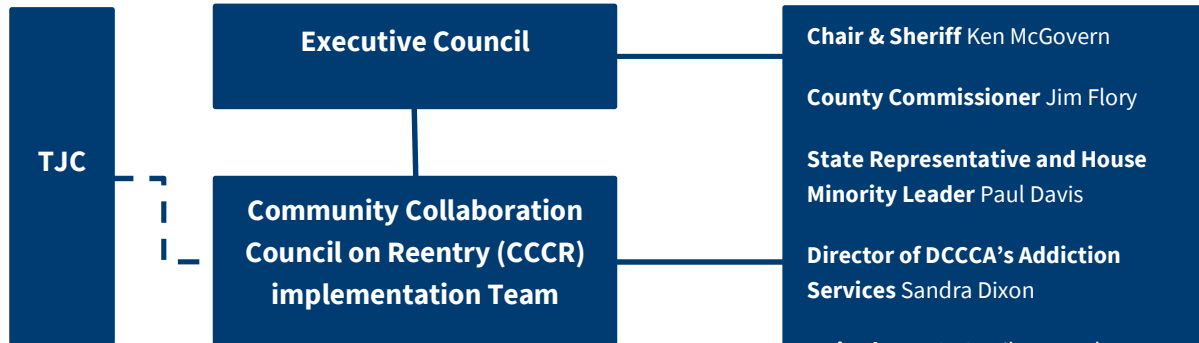
Transitional (Work Release) and Community-Based Services & Treatment programs):

- Complete Triage Matrix of 'who gets what' intervention
- Initiated a booking screening assessment for risk
- Developed LoCIRP (Local Correctional Inmate Release Plan)
- Compiled community resource cards
- Measure stakeholder participation annually
- Gained greater understanding of policies, procedures, protocols and practices that impact reentry

Future Endeavors:

- Case management, pre- and post-release
- Expanding program offerings and volunteers to match community-based programs for consistent availability pre- and post-release
- Adding mentoring programs, pre- and post-release
- Intervening with pre-trial population
- Developing additional step-down transition points
- Measuring effectiveness—what works? what doesn't?

Committee Members and Organizational Structure:



Work Groups:

Mission Statement; Resource Card; Screening & Assessment; Data Evaluation; Case Management and Release Plan; Programs; and others to be determined

Contact Information:

Shannon Murphy - Reentry Director and TJC Coordinator Douglas County Sheriff's Office,
<http://www.dgso.org>

Correctional Facility
3601 E 25th Street
Lawrence, KS 66046

Phone: (785) 830-1001
Fax: (785) 830-1085
smurphy@douglas-county.com

Transition from Jail to Community Project: <https://info.nicic.gov/tjc>

Chair: Shannon Murphy

Vice-Chair: Deborah Ferguson, Deputy Director, Douglas County Community Corrections

Kyle Appleby, **Corrections Officer II/Work Release Team Leader**

Jess Bartlett, **DCCCA**

Sally Bartlett, **Lawrence Community Shelter**

Mike Caron, **Programs Director**

Jeannette Collier, **ECKAN**

Darcie Holthaus, **Deputy Sheriff**

Kate Heinen, **WTCS**

Heather Hoy, **Lawrence Douglas County Housing Authority**

Rev. Pam Morrison, **Amazing Grace Community Church**

Jim Rumsey, **Defense Attorney**

Sharen Steele, **High School Diploma Completion Program**

Dr. Marciana Vequist, **Bert Nash Community Mental Health Center**

Norm White, **SRS**

Chair & Sheriff Ken McGovern

County Commissioner Jim Flory

State Representative and House Minority Leader Paul Davis

Director of DCCCA's Addiction Services Sandra Dixon

United Way CEO Erika Dvorske

Lawrence Community Shelter Director Loring Henderson

Executive Director Lawrence

Douglas County Housing Authority Barbara Huppee

CEO Lawrence Chamber of Commerce Tom Kern

CEO ECKAN Richard Jackson

The Honorable Michael J. Malone

COO Bert Nash Community Mental Health Center Pat Roach Smith

City of Lawrence Legal Services Director Toni Wheeler

SRS Community Collaborations Norman White