



Davidson County Sheriff's Office  
 Proxy Data Report - Unique Inmates  
 10/9/09- 12/6/10

This report includes inmates who were housed and classified during the date range entered.  
 The data is self-reported and is obtained during the initial classification assessment.  
 For inmates who have been arrested more than once, only the most recent proxy answers are taken.

Number of unique inmates responding: 10,947

Current Age	Age of First Arrest	Number of Prior Arrests
( 15 - 27 ) = 2	( 0 - 18 ) = 3	( 0 - 3 ) = 1
( 28 - 39 ) = 1	( 19 - 20 ) = 2	( 4 - 10 ) = 2
( 40 - 89 ) = 0	( 21 - 75 ) = 1	( 11 - 800 ) = 3

Current Age: The sample concluded the following breakdown of current age:

- 1/3 were 40 years old or older
- 1/3 were between 28 and 39 years old
- 1/3 were 27 years old or younger

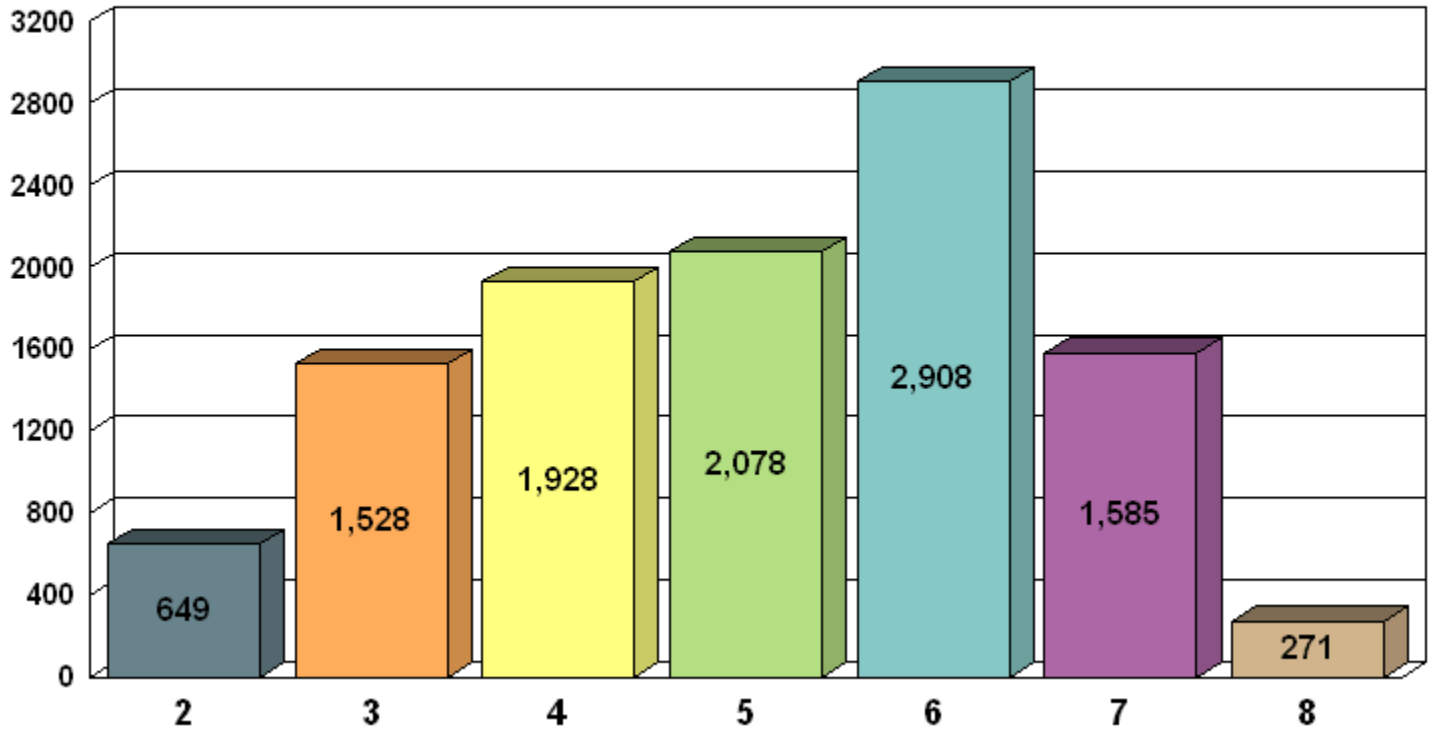
Age at First Arrest (AFA): The sample concluded the following breakdown of reported age of first arrest:

- 1/3 reported they were 21 years old or older at their first arrest
- 1/3 reported they were between 19 and 20 years old at their first arrest
- 1/3 reported they were 18 years old or younger at their first arrest

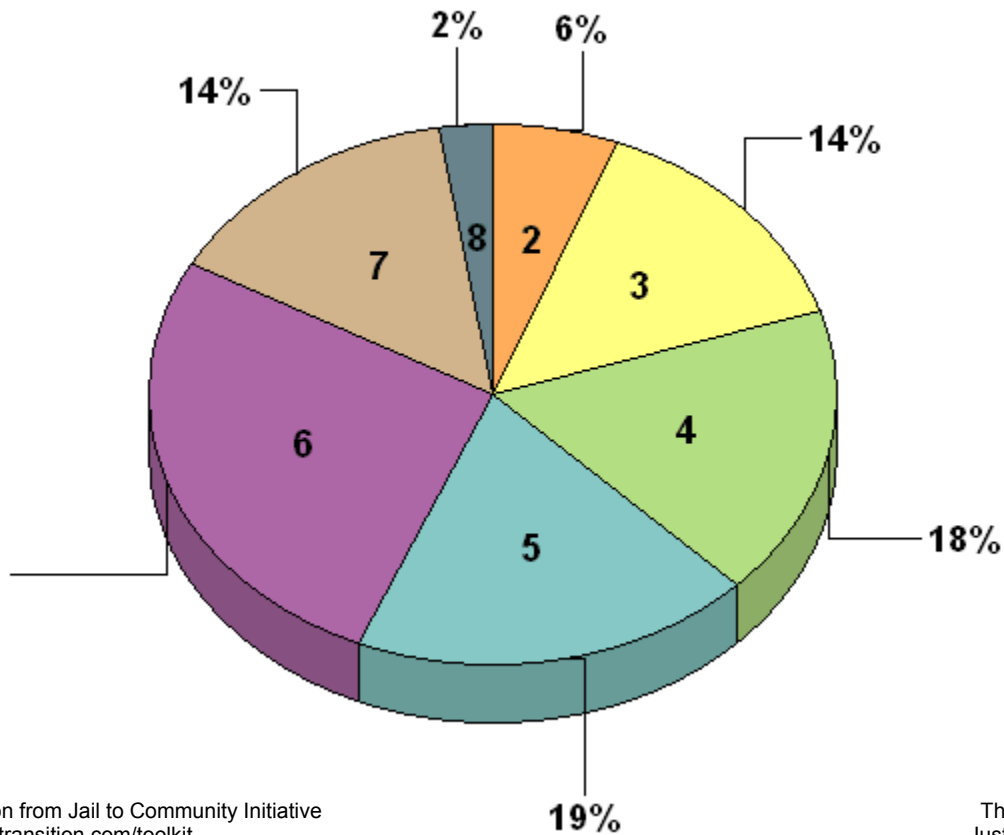
Prior Arrests: The sample concluded the following breakdown of prior arrests:

- 1/3 reported 3 or fewer prior arrests
- 1/3 reported between 4 and 10 prior arrests
- 1/3 reported 11 or more prior arrests

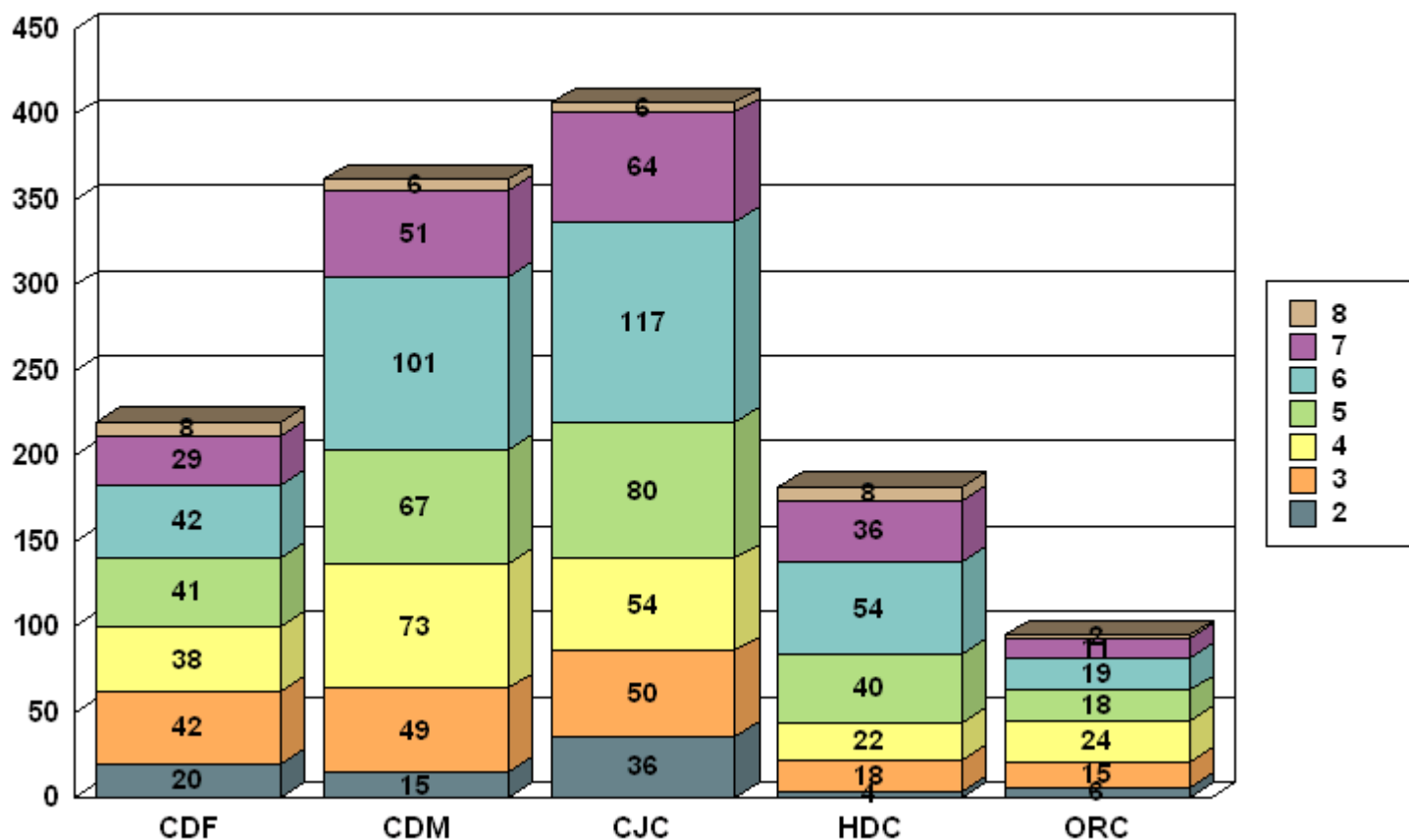
## Number of Inmates by Proxy Score



## Percentage of Inmates by Proxy Score



## Number of Inmates by Facility & Score



## Percentage of Inmates by Facility & Score

