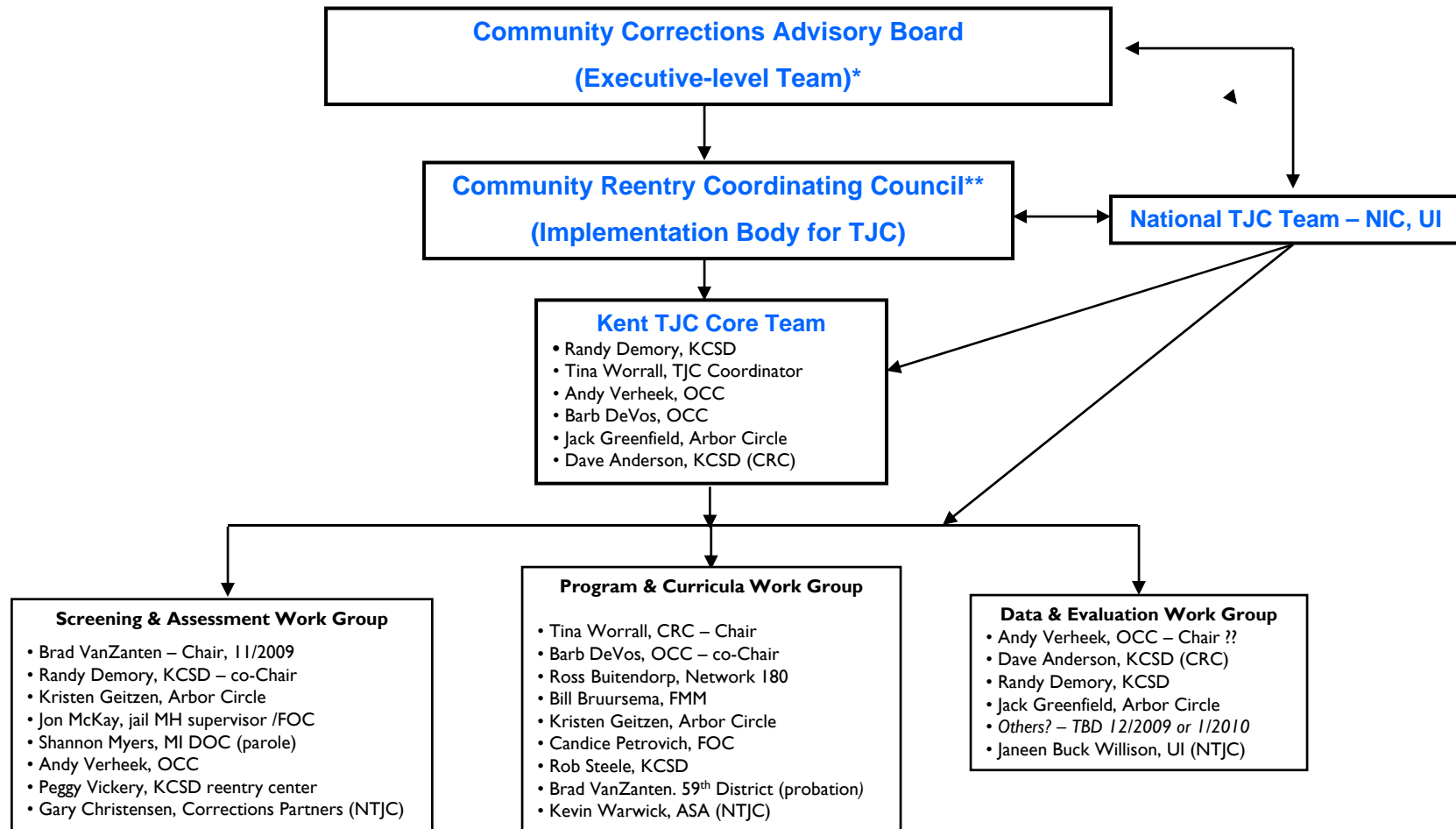


Kent County TJC Initiative Structure



* Circa 1989; the CCAB distributes and administers community corrections grant funding, forum for all local criminal justice planning. Members represent the judiciary, county commission, prosecution, defense bar, local law enforcement, Sheriff, business community and community-based organizations.

** Established June 2008; meets monthly. The CRCC focuses exclusively on reentry and its related issues, and membership mirrors the CCAB but different individuals staff the CRCC.