

# Association of State Correctional Administrators (ASCA) Performance Based Measures System



# Performance Based Measures System (PBMS)



- PBMS was established by ASCA to enable agencies to:
- Measure agency and facility performance against correctional standards and performance measures;
  - Provide for “Apples-to-Apples” comparisons based on established counting rules defined by corrections;
  - Enable sharing and comparison of performance among all ASCA agencies; and
  - Maintain measures current and relevant to contemporary correctional practices.

# PBMS – What is it?

**PBMS** is a hierarchical typology of performance standards, measures, and key indicators of critical practices that was designed to translate the missions and goals of correctional agencies into a set of measurable outcomes (i.e., it's a tiered data base full of useful information.)

Performance Measures Committee (**PMC**), with input from ASCA members and PBMS end users, develops performance standards, measures, and key indicators.

# PBMS - Hierarchy

1. Standards of Performance: Correctional goals of performance to be measured, for example, Public Safety
2. Measures (for example, Escapes; or Recidivism)
3. Key Indicators of Performance (Ex. Escapes from a Secure Facility; Overall rate of Recidivism within 36 months, etc.)
4. Counting Rules: Definition of the indicator and the specific rules for counting the events.

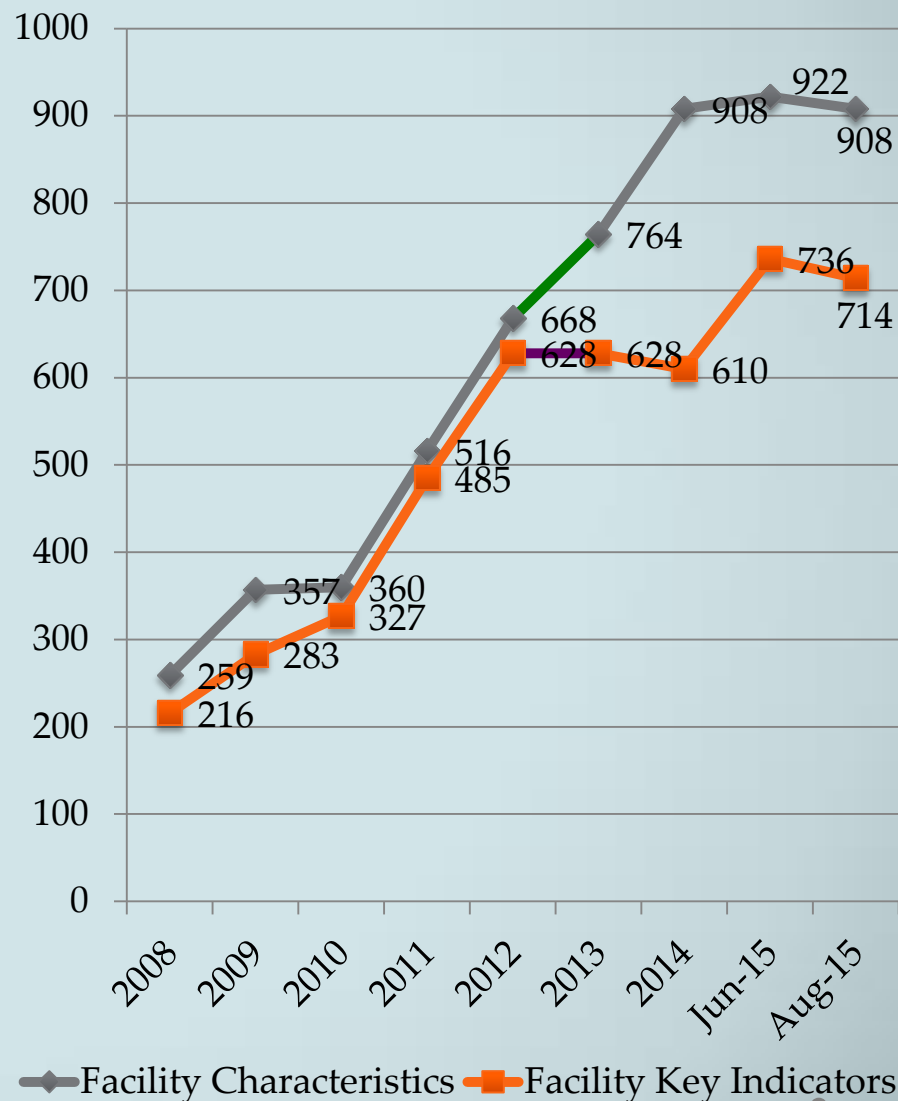
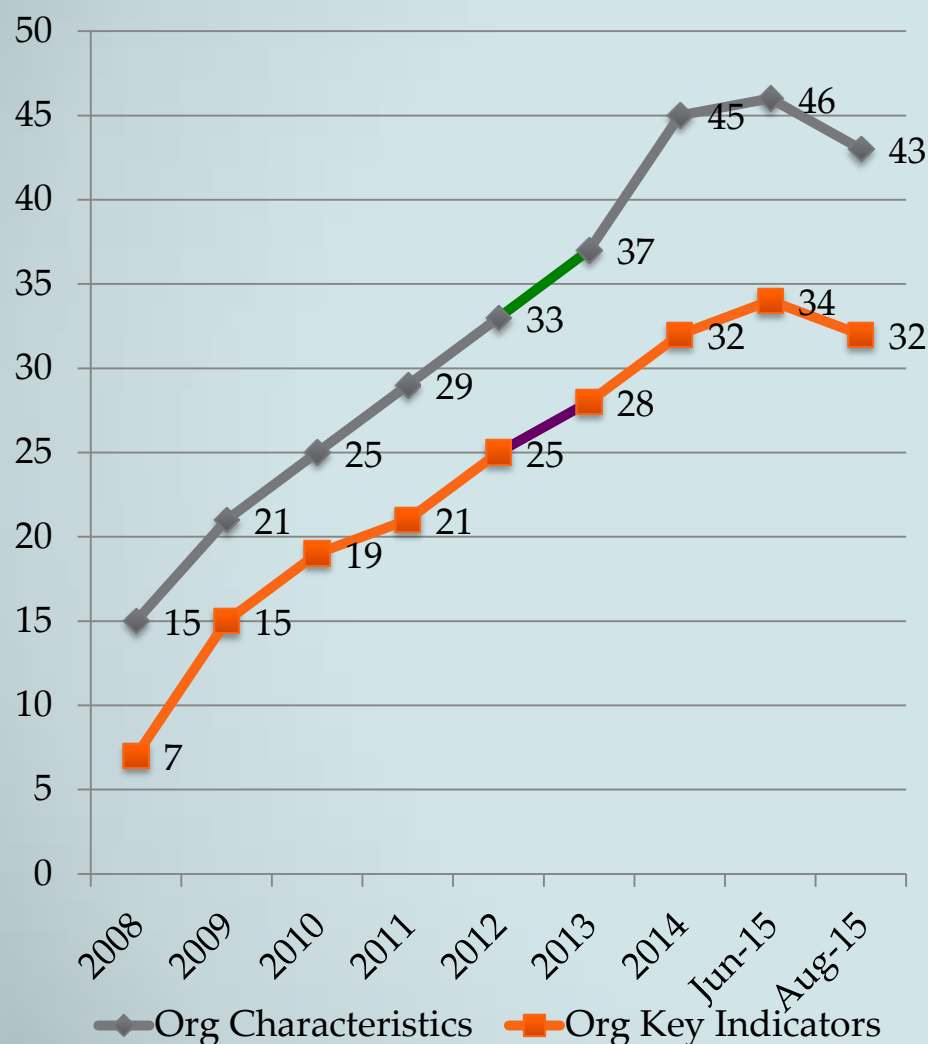
# PBMS - Wide and Deep

Wide: Monthly Data are collected on more than 100 measures of agency performance at both agency and facility level.

Performance Standards include:

- I. Contextual Information – Characteristics Data
- II. Public Safety
- III. Institutional Safety
- IV. Substance Abuse
- V. Mental Health
- VI. Justice
- VII. Education
- VIII. Academic Education
- IX. HealthCare
- X. Fiscal
- XI. Personnel

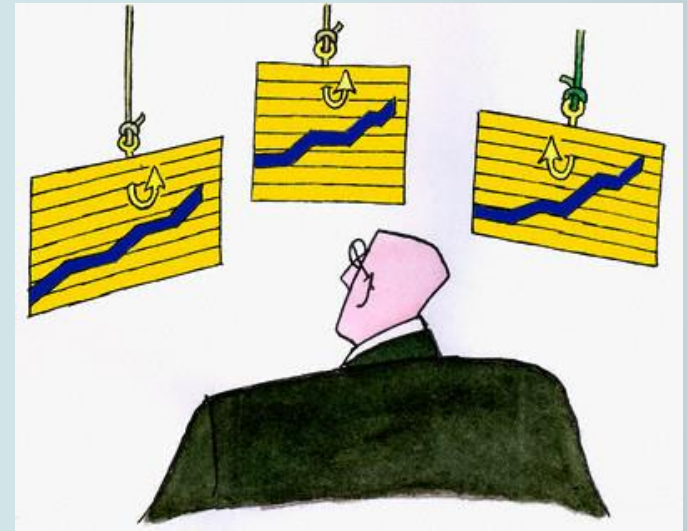
# Deep: # of Organizations and Facilities for which PBMS Characteristics and Key Indicators were Input



# Agency Report Capabilities

**Track your agency's performance on important operational, program and service measures, for example:**

- **Numbers of inmates needing and accessing health, academic services, substance abuse treatment, or psychological services;**
- **Numbers and rates of recidivism**
- **Population characteristics.**

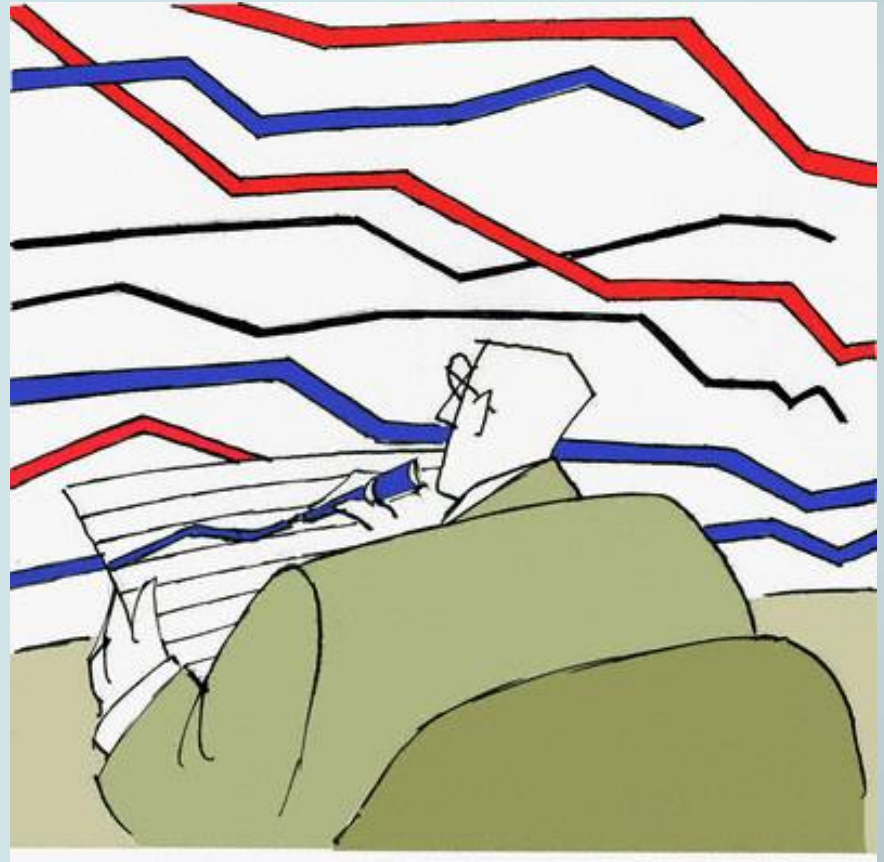




# Agency Report Capabilities

Compare your agency's performance rates -- such as recidivism, technical violation rate, substance abuse treatment rate with:

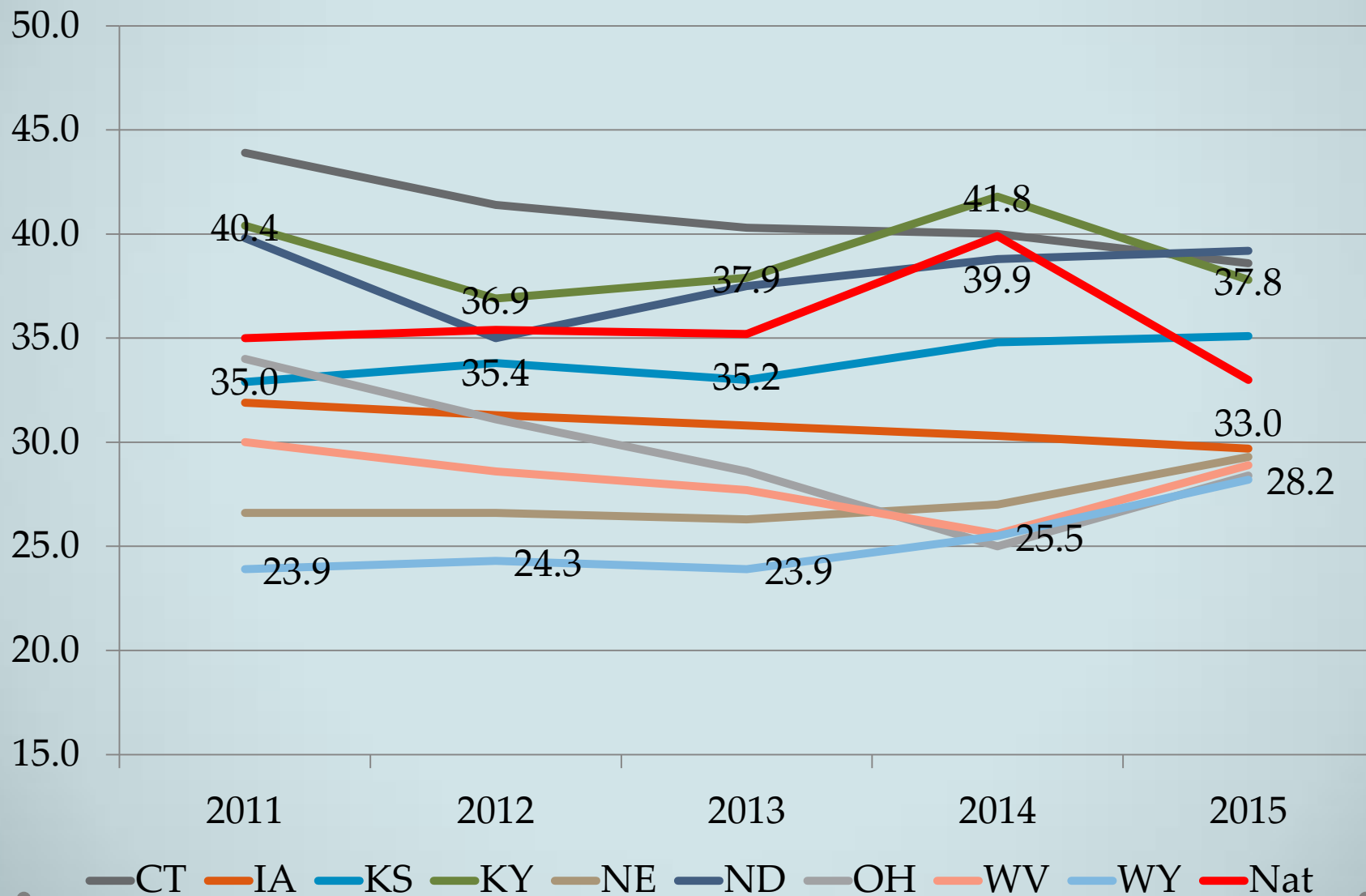
- Other jurisdictions similar to yours,
- All agencies,
- Regional/neighbors, or
- National average.





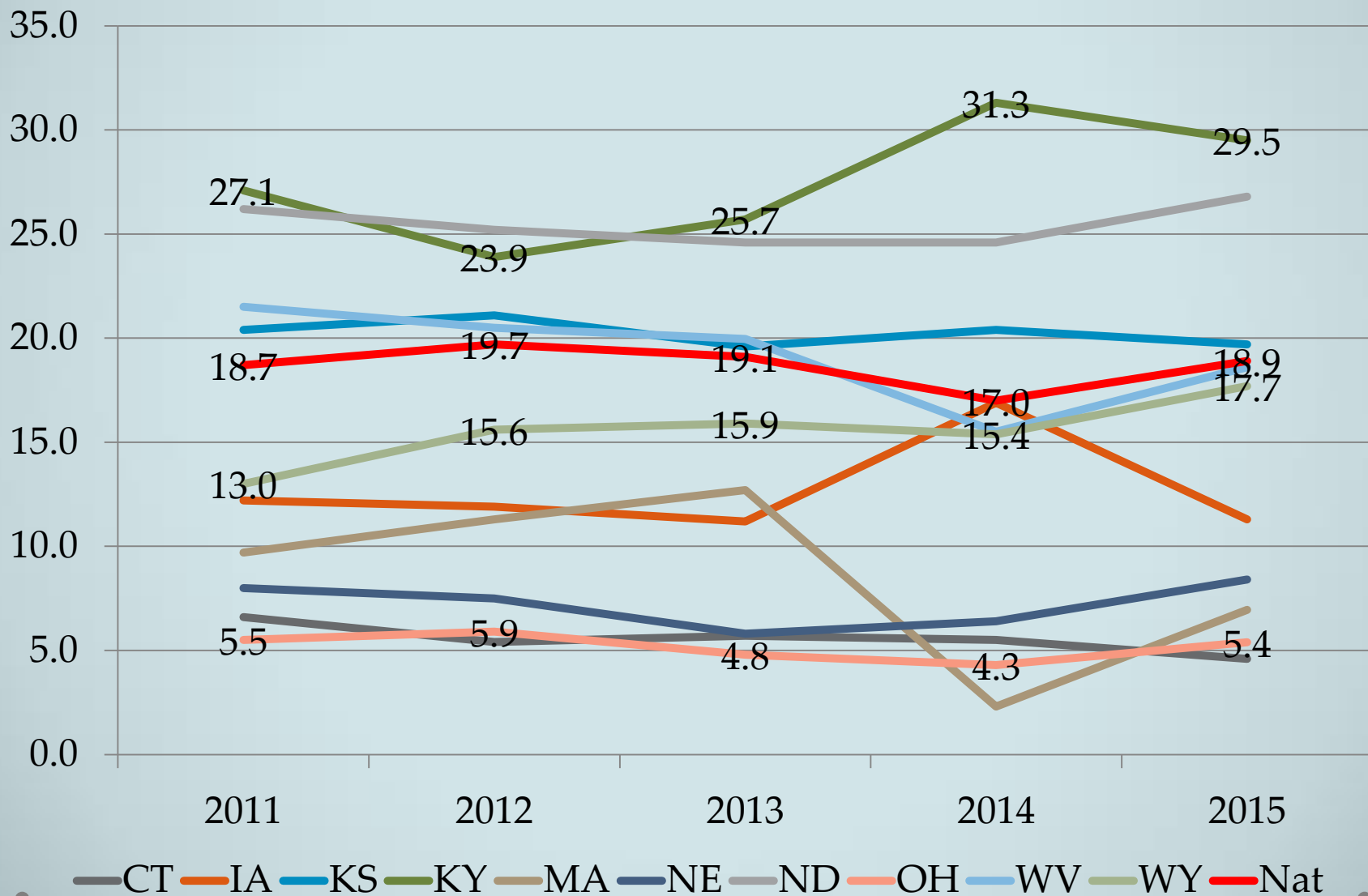
# 2011 – 2015

## Overall Recidivism Rates – 36 Months

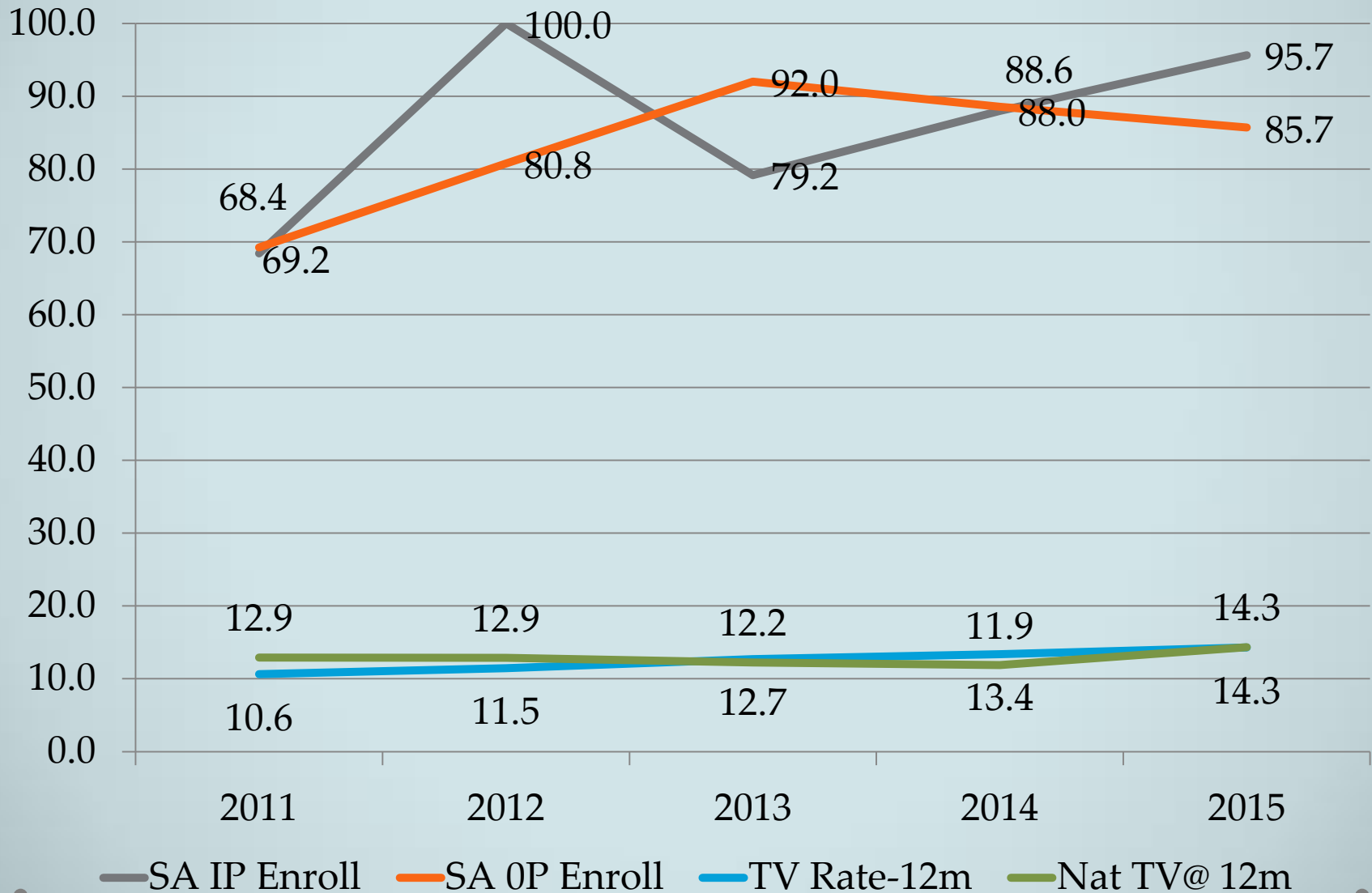


# 2011 – 2015

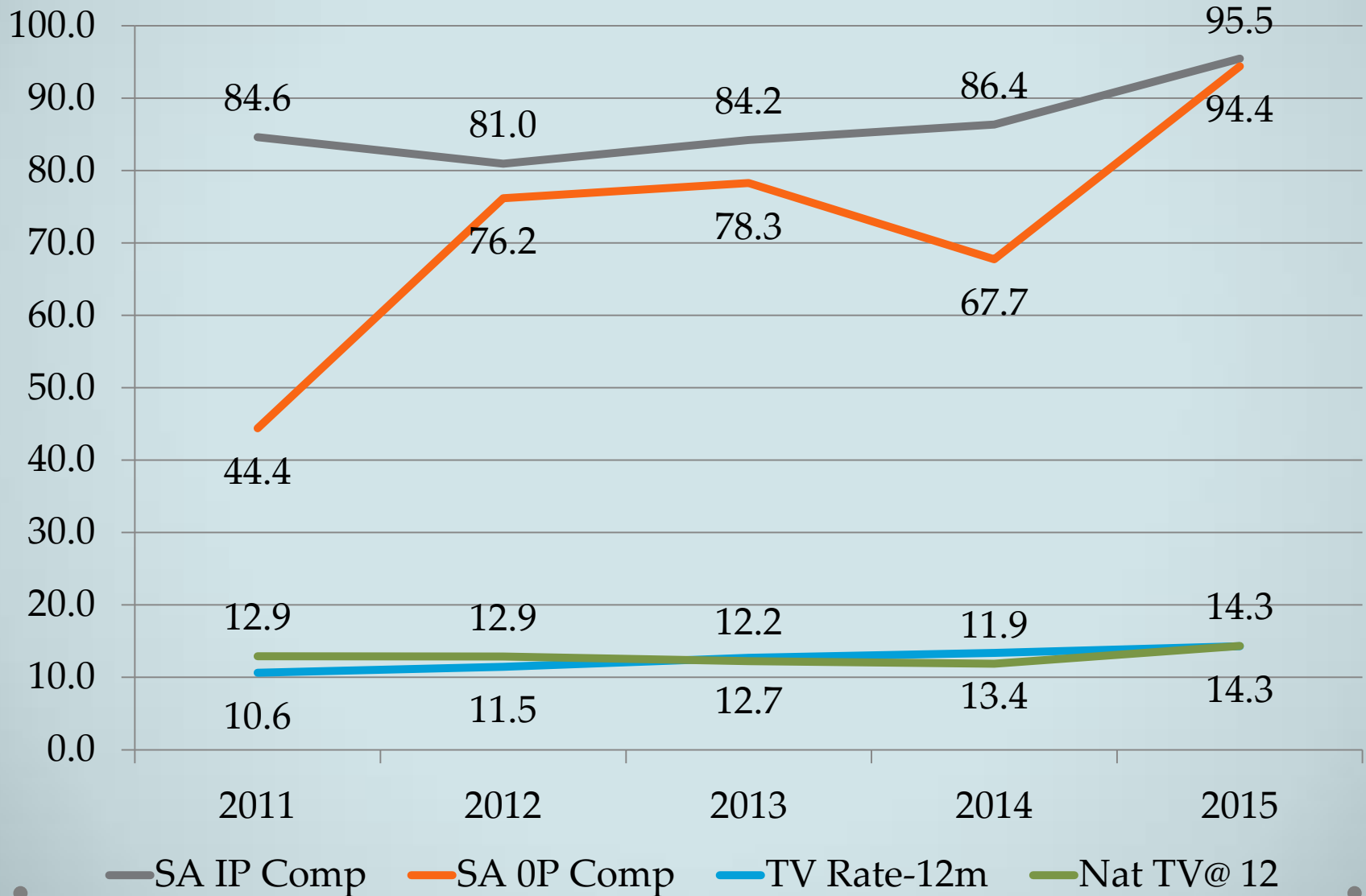
## Technical Violation Rates – 36 Months



# WY DOC Substance Abuse Enrollment Vs. 12-Month Technical Violation Rates - 2011 – 2015

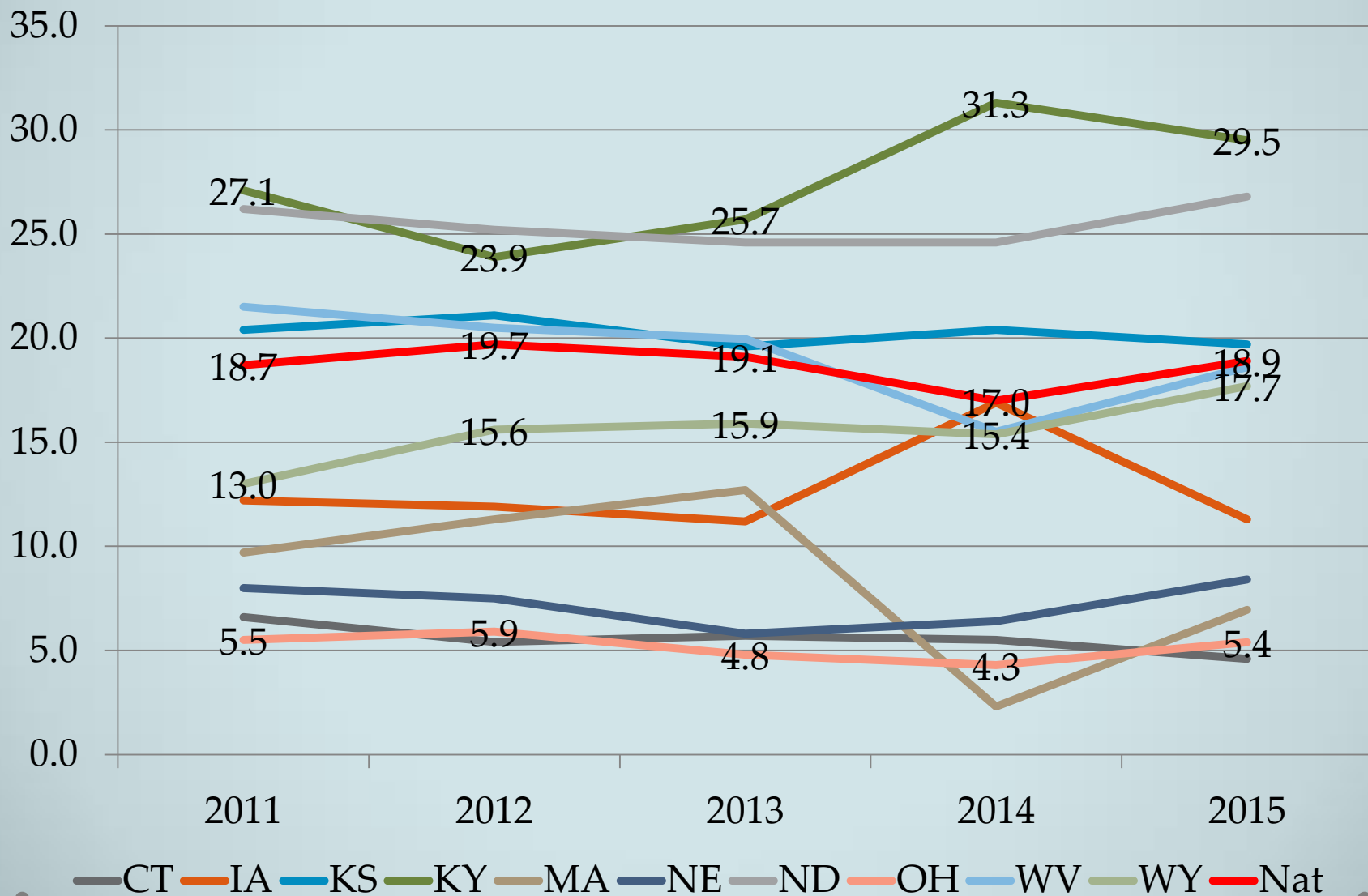


# WY DOC Substance Abuse Completions - 2011 – 2015

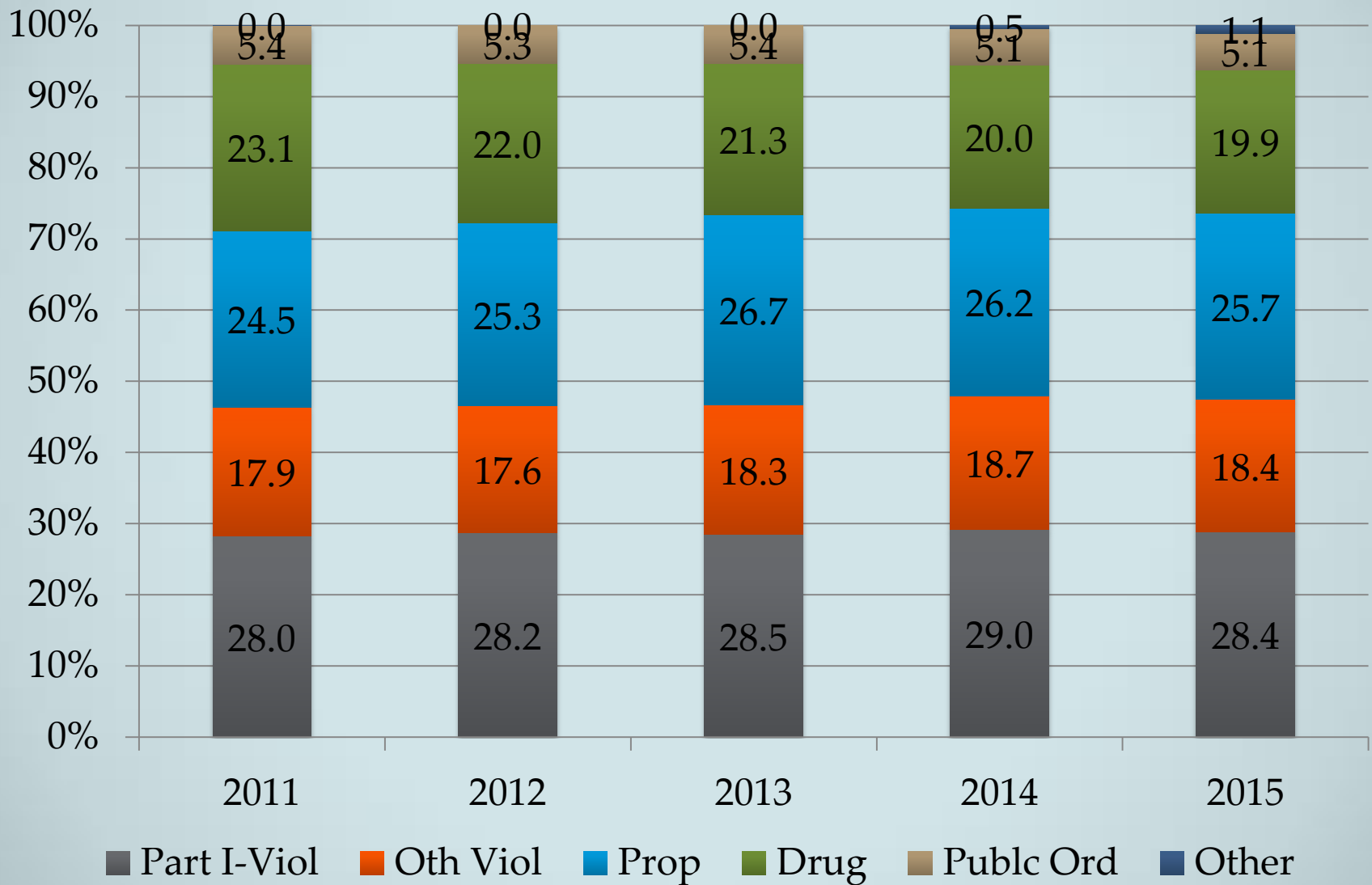


# 2011 – 2015

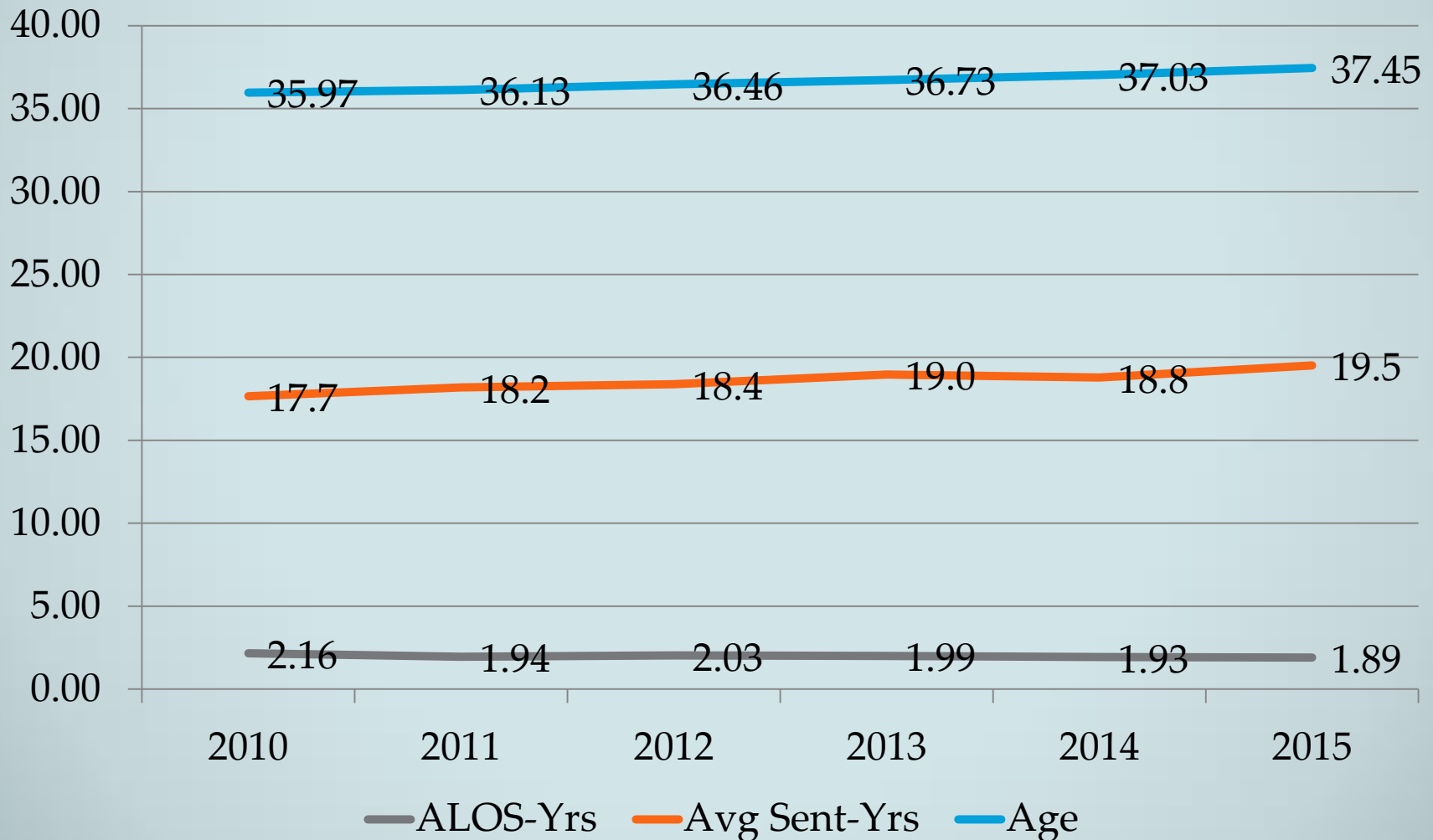
## Technical Violation Rates – 36 Months



# KY DOC Most Serious Current Offense Trends 2011-2014

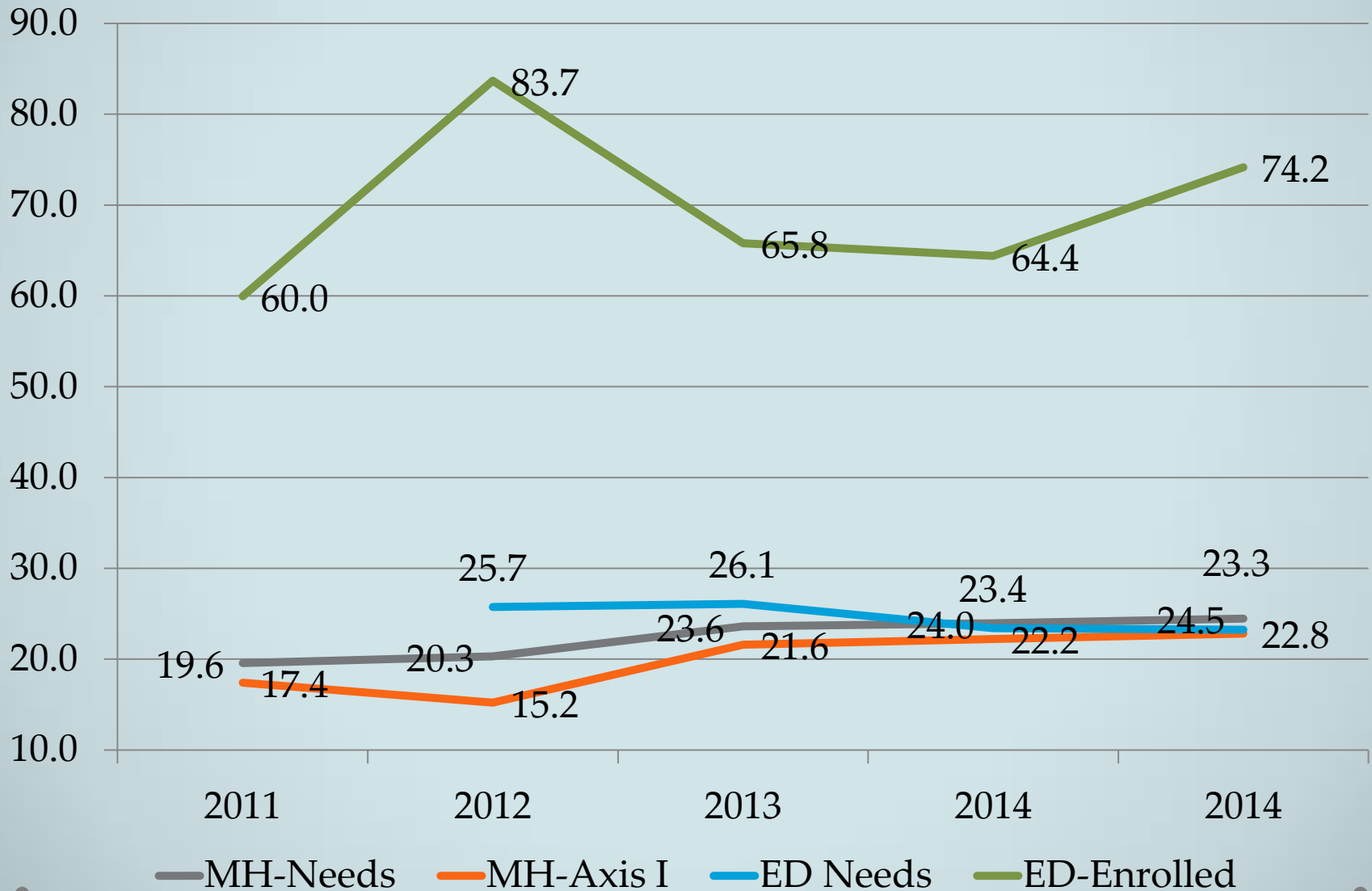


# NE DCS Sentence Length vs. Length of Stay And Age Trends: 2010 - 2015



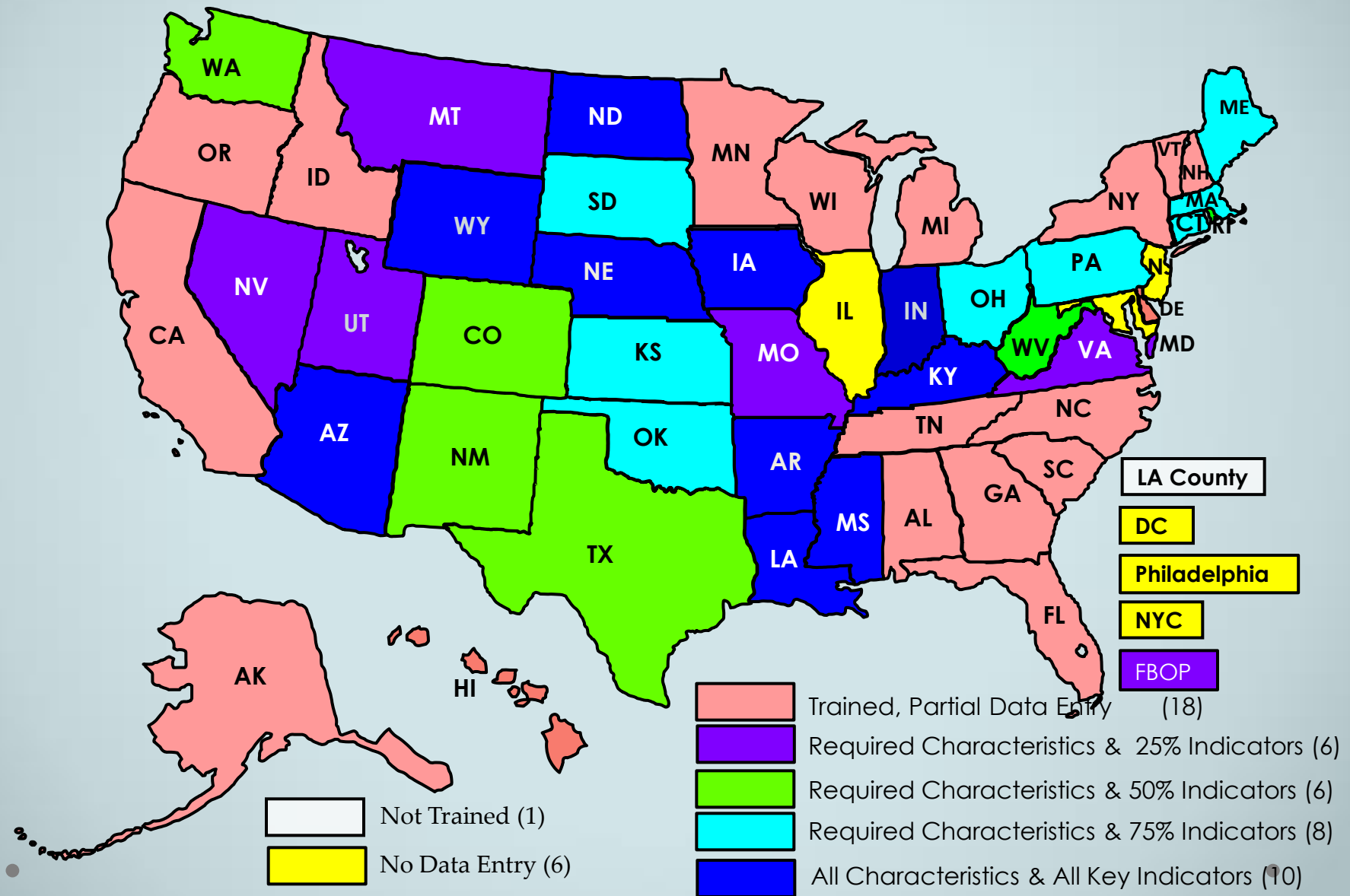


# Mental Health and Education Needs Among IN DOC Population - 2011 – 2015



# Agencies' Participation in PBMS

## August 27, 2015



Find out more about PBMS  
standards, measures, key  
indicators and counting rules at:

**[www.asca.net/pbms](http://www.asca.net/pbms)**

**Email Patricia Hardyman:**

**[phardyman@asca.net](mailto:phardyman@asca.net)**

**Old fashion way (it still works) – 413-329-8373 or 413-229-2384**